

NOTICE: CALL FOR ELECTION AND CANDIDACY

MPE 2023 ANNUAL MEETING AND BOARD OF DIRECTOR ELECTIONS

Director election notification

This is to notify all Mountain Parks Electric, Inc. Members that a Director election is being prepared for Director District 1 and District 3. The election will take place at the Annual Meeting on the date and time indicated below. Directors serve a four-year term and are elected from specific geographic areas within MPE's service territory. District 1 may be generally described as those portions of the Town of Fraser and surrounding area east of Highway 40 and also includes the northernmost portion of the Town of Winter Park east of Highway 40. District 3 consists of Jackson County and a portion of Larimer County. A map of the Director districts is included in this notice. Please contact MPE to confirm which district you are eligible in.

Time, date & location of 2023 Annual Meeting

MPE's 73rd Annual Meeting will be held on Saturday, May 13, 2023, at Middle Park High School, 795 North 2nd Street in Granby, Colorado. Registration and breakfast will begin at 8 a.m. The business session will begin at 9:15 a.m. In-person balloting will be available during the business portion of the Annual Meeting for Members who have not voted by mail. Balloting will cease no earlier than ten minutes past the time the meeting is called to order.

How to become a candidate

To be eligible to become or remain a Director, any Member in good standing of the Cooperative and who meets the qualifications of Bylaw Article IV, Section 3(a) and (b) is eligible to submit a nominating petition to become a candidate for the Board of Directors no later than 5:00 p.m., Tuesday, March 14, 2023. Nominating petitions must be signed by at least 15 qualified Members of the Cooperative and submitted to the Cooperative accompanied by the supporting documents specified in Article IV Section 3(a) of MPE's Bylaws.

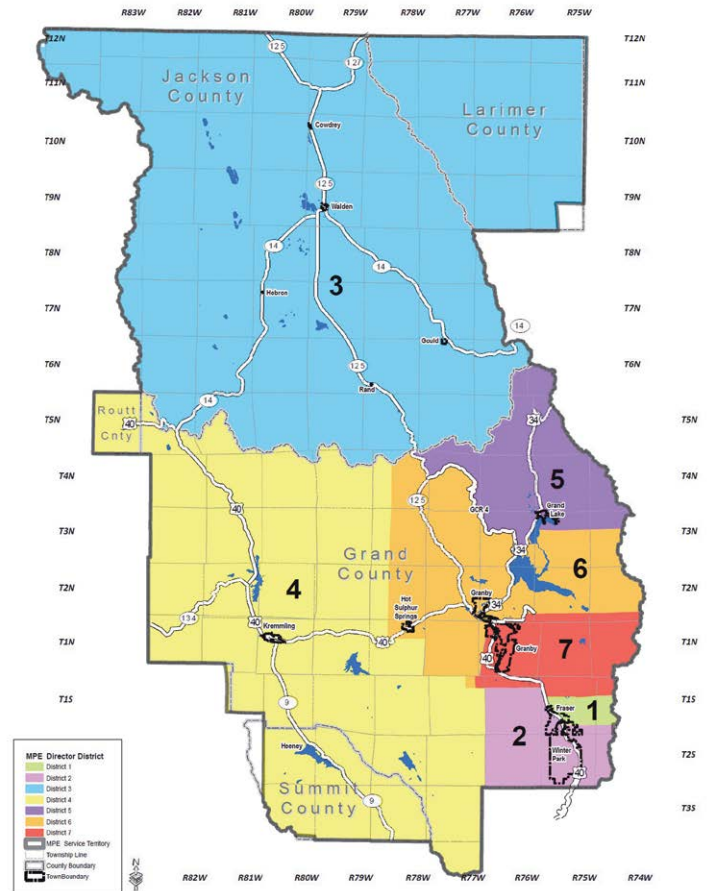
Petitions available

Director Nomination Petitions are available at MPE's offices in Granby and Walden and can also be mailed to candidates upon request. Any questions regarding election procedures can be directed to Mark Johnston or Rob Taylor by calling 970-887-3378.

Voting

In the case of a contested election, mail-in ballots will be mailed to Members in the corresponding contested election district. Ballots will be mailed no later than April 18, 2023. Members receiving a ballot can cast their ballots by return mail, by dropping off their ballots at MPE's Granby or Walden office or by voting in person at the Annual Meeting. Mail-in ballots must be received by the Credentials Committee by May 10, 2023. Members voting by mail-in ballot will not be allowed to vote at the Annual Meeting.

Mountain Parks Electric Director Districts



For a legal description of director district boundaries, visit mpei.com/bylaws (Article IV, Section 2)

Qualifications (from Article IV of MPE's Bylaws)

Board Members Section 3: Qualifications

(a) Each candidate for election to the Board shall be a Member of the Cooperative and shall have his/her "main home" in the District for and in which the election is to be held, (as the term "main home" is defined by the Internal Revenue Service), and who shall have furnished the Cooperative with a written statement telling why the Member wishes to run for election and that the Member, if elected, can and will attend all meetings of the Board, subject only to unforeseen conditions beyond the control of the Member, and meets or will meet the qualifications set forth in subparagraph (b) below.

(b) To be eligible to become or remain Director, the person shall: (i) be a Member of the Cooperative; (ii) receive electric service from the Cooperative at his or her "main home"; (iii) be able to actively participate in the management of the business and affairs of the Cooperative; (iv) not be employed by, substantially financially interested in, or represent the interests of a business in competition with

[continued on page 10]

MPE REBATES 2023



RESIDENTIAL REBATES



ENERGY STAR CLOTHES DRYERS

- \$30
- \$90 for ventless heat pump clothes dryer



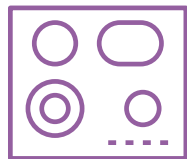
LED LIGHTS

- Up to 50% of lamp/fixture cost, capped at \$8 per lamp/fixture
- 500 lumen minimum
- Max. 50 bulbs per year per member



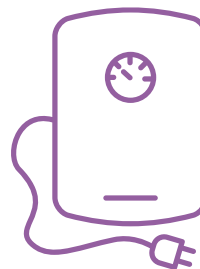
REFRIGERATOR & FREEZER RECYCLING

- Recycling: \$60/unit



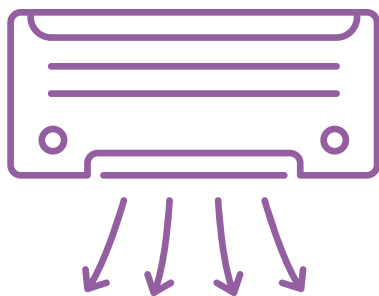
INDUCTION COOKTOPS

- \$100 per unit for electric-to-induction replacements Carly Tongren, ACCT 947012067
- \$350 per unit for gas-to-induction replacement or new construction



WATER HEATERS

- Fuel-switching only: natural gas or propane to electric
- \$180/unit, 30-gallon minimum
- Heat pump water heater: \$350



ELECTRIC HEAT PUMPS

AIR-SOURCE INSTALLER INCENTIVE

- Up to \$250/installation
- Installer must complete MPE-required training

TIER 1 HEAT PUMPS (HSPF 9, SEER 15)

- 2 ton or smaller: \$675, not to exceed 50% of equipment cost
- > 2 tons: \$1,800, not to exceed 50% of equipment cost

TIER 2 HEAT PUMPS (HSPF 10, SEER 16)

- \$1,000/ton, up to 6 tons
- Not to exceed 50% of equipment cost
- Air-to-water unit rebates also available

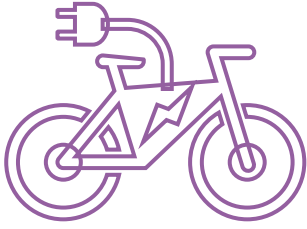
GROUND SOURCE

- \$500/ton for new systems
- \$250/ton for replacement systems

Terms and conditions apply for all MPE rebates. Visit mpei.com/rebates for more details.

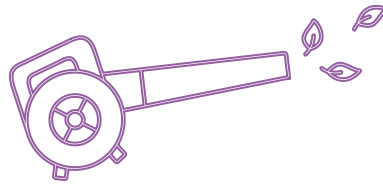
Members must provide MPE with receipt within 90 days of purchase.

OUTDOOR ELECTRIC POWER EQUIPMENT



E-BICYCLES

25% of cost up to \$150



LEAF BLOWERS, POWER WASHERS, PRUNERS & TRIMMERS

25% of cost up to \$50



CHAINSAWS

25% of cost up to \$100

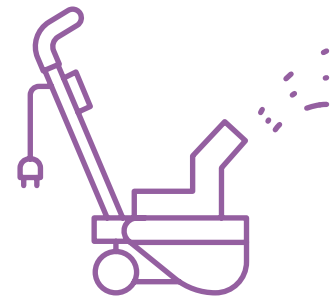


MOWERS

- Riding mower: 25% of cost up to \$1,000
- Walk-behind mower: 25% of cost up to \$150

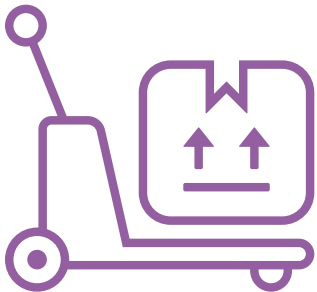
POWER EQUIPMENT BATTERIES

- 50% of cost up to \$25
- Minimum purchase price of \$50/battery



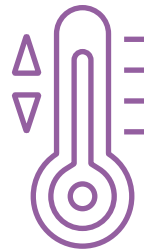
SNOWBLOWERS

25% of cost up to \$150



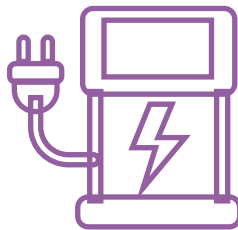
PALLET JACKS

Up to \$1,500, capped \$20,000 (while funds are available)



SMART THERMOSTATS

- \$25
- Line-voltage only (for electric heat), limit 5 per member



ELECTRIC VEHICLE CHARGING EQUIPMENT

LEVEL 2

- 50% of total equipment + install costs up to \$1,000

LEVEL 3 (DC Fast Charger)

- \$3,000 – \$7,500, 50 kW minimum
- Applicable to equipment and installation costs only



FORKLIFTS

Up to \$5,000, capped \$20,000 (while funds are available)

COMMERCIAL REBATES* ALSO AVAILABLE FOR:

- LED exit signs
- Lighting retrofits
- Motion sensors Allen Lawrence, ACCT 110487802
- Refrigerator/freezer case lighting

*Terms and conditions apply. See mpei.com/rebates for more information.

CALL FOR DIRECTOR ELECTION AND CANDIDACY

[continued from page 7]

the Cooperative; and (v) become NRECA certified as a Director through course attendance within five (5) years of the election or appointment as a Director.

(i) No more than two (2) Directors (other than a publicly elected government official) shall be permitted to serve concurrently who are either employees of, serve as a Director or trustee of,

or act as a consultant to, the same organization. Employee means employment for at least 20 hours per week for 20 consecutive weeks.

(ii) If a circumstance described in (i) arises after a Director is elected, the Director who obtains a relationship with an organization subsequent to the formation of a relationship by other Directors shall be disqualified from serving.

What Will 2023 Bring? Stay Tuned.

BY MARK JOHNSTON GENERAL MANAGER

You may have noticed no rate increase in your January Mountain Parks Electric bill. It's our seventh consecutive year without one. This might surprise you since, over the past year, the cost of almost everything has increased — in many cases significantly. Here at MPE, we do our best to reduce operating costs without sacrificing service. But despite this, as you may suspect, the cost of doing business has increased, especially the price of poles, wires, conduit, transformers, gas and vehicle upkeep. Tom Thomasson, ACCT 1026086

So why didn't your electric rate increase? The short answer is MPE's efforts to work more efficiently and increased electric

sales are offsetting rising operating costs. But that likely won't be the case for much longer. Our power supplier, Tri-State G&T, plans to increase wholesale power costs in 2024. What we do not yet know is how much the increase will be.

Have you ever watched the Food Network Channel show Unwrapped? Each week, the show uncovers behind-the-scenes details of classic American food — peanut butter, chocolate syrup, French fries and bubblegum. The host, Marc Summers (or Alfonso Ribeiro, if you watch newer episodes), explores the test kitchens and the secrets behind lunch box treats, soda pop, movie candy and more.

Similarly, over the next couple of



MARK JOHNSTON

months, I plan to provide you with a behind-the-scenes look at what determines the cost of your electric bill. I hope you will take this journey with me to understand the factors that determine how much you pay each month. I will also share several ways that MPE is investigating to offset future cost increases. Stay tuned to *Colorado Country Life* and MPE's social media channels to learn more.



Find Your Name Win \$5

If you find your name in this magazine, contact Mountain Parks Electric to receive a \$5 credit on your power bill. Winners must contact MPE within one month of the date of issue.

