



2025 COOPERATIVE IMPACT REPORT

You're Invited to the PVREA Annual Meeting

Saturday, April 11



Doors Open at 7:30am
Business Meeting Begins at 9:00am
Embassy Suites, Loveland, CO

Enjoy free food, giveaways, fellowship, and entertainment.

Learn more at www.pvrea.coop/annual-meeting



The Co-op You Can Count On

As a cooperative, every decision begins and ends with our member-owners.

Our cooperative model keeps us grounded in the needs of those we serve and accountable to them.

At Poudre Valley REA, being the co-op you can count on means delivering on our promises so our member-owners can trust in us today, tomorrow, and every day ahead.



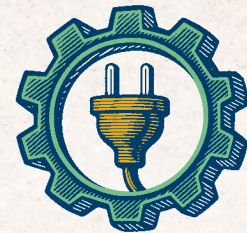
ROOTED IN VALUE

Proudly ranked #1 for lowest rates in Colorado while adding value and reinvesting in our communities.



STEADY THROUGH EVERY SEASON

Ranked among our nation's best for keeping the lights on and restoring service quickly and safely.



BRANCHING OUT TO SERVE

We're committed to meet and exceed your evolving energy needs.



GROUNDING IN COMMUNITY

Your locally governed, member-owned cooperative is well positioned to serve the needs of our communities.



STRONGER SIDE BY SIDE

Your co-op was built by and for the members we serve.



REACHING TOWARD TOMORROW

We are committed to be the co-op you can count on today, tomorrow, and every day ahead.

Read the full 2025 Annual Report at www.pvrea.coop



POUDRE VALLEY REA ANNUAL MEETING

Saturday, April 11

DOORS OPEN AT 7:30 AM
EMBASSY SUITES IN LOVELAND, CO

SPEND A MORNING WITH YOUR CO-OP

As a member-owner of your local electric cooperative, you have a vote and a voice in how your co-op operates.

Whether you've just joined or are a long-time member, we welcome you and your family to attend.

Enjoy breakfast, coffee, bucket truck rides, electrical safety demonstrations, free giveaways, kids activities, and be entered to win amazing door prizes.

Plus, you'll learn how we remain committed to be the co-op you can count on today, tomorrow, and every day ahead.



AGENDA

- | | |
|-------------|---|
| 7:30am | Doors Open & Breakfast Buffet Begins |
| 7:30-9:00am | Registration & In-Person Voting |
| 7:30-9:00am | Bucket Truck Rides, Safety Demos & Community Booths |
| 7:30-9:00am | Childcare Check-In Available |
| 8:00am | Entertainment Begins |
| 8:15am | Door Prizes Start |
| 8:45am | Opening Ceremony & Celebrations |
| 9:00am | Business Meeting Begins |



GRAND PRIZE – \$3,000 TRAVEL VOUCHER

Each member who attends the meeting is entered to win the Grand Prize.



FREE PARKING

Complimentary parking is available for all PVREA members and guests.



CHILDCARE & ACTIVITIES

Free childcare is available during the business portion of the meeting for those who RSVP.

Kid-friendly activities include bucket truck rides, safety demonstrations, face painting, balloon animals, games & more!



\$1,000 LUCK-OF-THE-DRAW SCHOLARSHIP

High school seniors continuing their education with at least one parent/guardian who is a PVREA member may enter to win.

Students must apply during the meeting's registration.

Applicants must not have already received a PVREA scholarship.



PROVEN TO DELIVER THE **LOWEST ELECTRIC RATES IN COLORADO**, HIGH RELIABILITY, AND TOP-TIER MEMBER SERVICE.



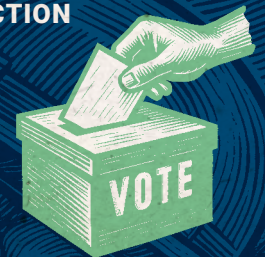
DISCOVER HOW WE AIM TO BE **THE CO-OP YOU CAN COUNT ON**

TODAY, TOMORROW, AND EVERY DAY AHEAD.

BOARD OF DIRECTOR ELECTION

Official Board of Director election ballots are mailed separately.

Members may vote by mail or at the annual meeting during registration.



RSVP BY MARCH 30



Members are encouraged to RSVP, especially for childcare.

Scan to RSVP or go to www.pvrea.coop/annual-meeting or call 800.432.1012

When Spring Snow Hits Hard



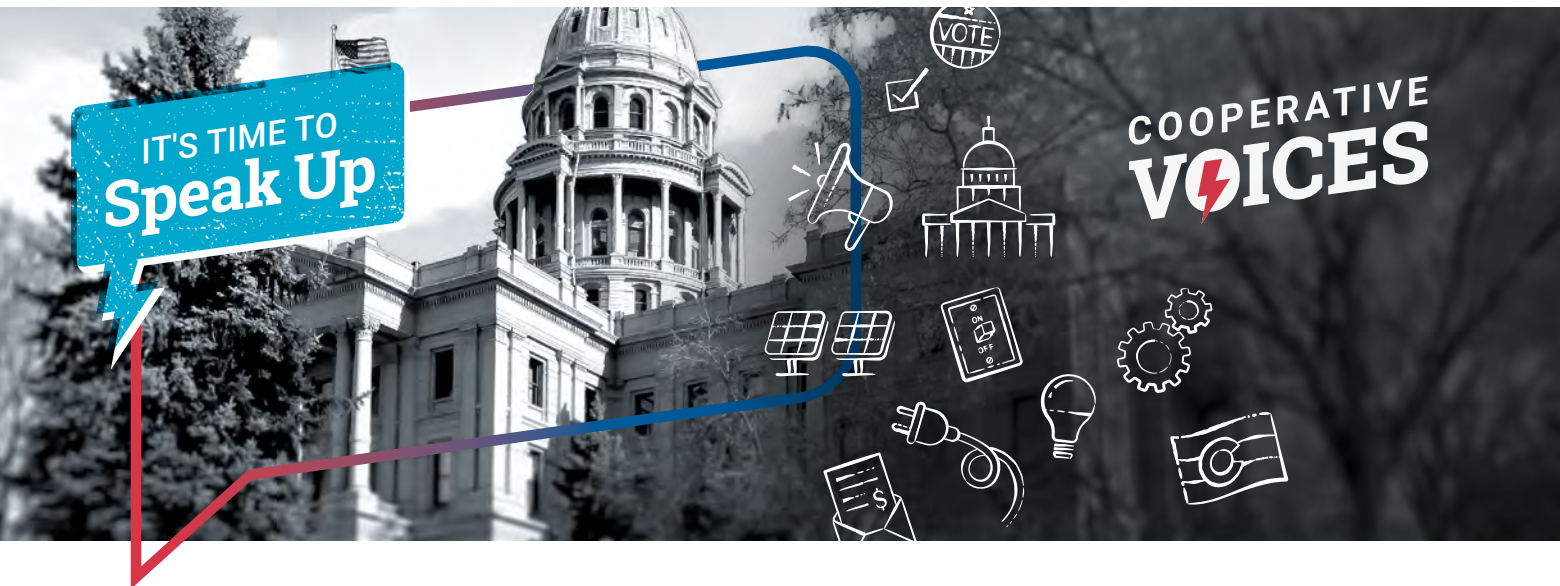
Heavy, Wet Storms Can Bring Big Impacts to Power & Safety

Along Colorado's Front Range, March can be the snowiest month of the year. This moisture-packed snow can weigh down trees and power lines, increasing the risk of outages and electrical safety hazards.

- If you see a downed line, stay back and report it.
- Use generators safely and never indoors.

- Even after storms end, melting snow can shift debris or freeze overnight creating new risks.

Find more electrical safety and winter storm preparedness information online at www.pvrea.coop



COOPERATIVE VOICES

Our electric cooperative is something special, and it's worth protecting.

As a proudly member-owned, locally governed cooperative, we deliver the lowest rates in Colorado, top-tier reliability, and nationally recognized communications and service.

Our difference shines through as we're owned by and accountable to you, our members, and not outside shareholders.

This legislative session, unnecessary and burdensome legislation may undermine our cooperative business model that has proven to deliver affordability, reliability, and exceptional service to our member-owners.

USE COOPERATIVE VOICES TO CONTACT COLORADO STATE LEGISLATORS.

Tell legislators not to judge our cooperative by the actions of others.

Too often, legislation is shaped by a one-size-fits-all approach that lumps all utilities together.

Don't change what's working — our cooperative is for the members, by the members, and it deserves thoughtful cooperative-aware policymaking.

LET OUR VOICE BE HEARD!

Email state legislators to advocate for your co-op.

Scan the code or go to www.pvrea.coop/cooperative-voices

